



Politechnika Łódzka

Published on *Politechnika Łódzka - Rekrutacja* (<https://rekrutacja.p.lodz.pl>)

... Here we study and live

Our campus is not only a symbol of the university, but also of the city. Close to the famous Piotrowska Street there is a compact area where you will find all university buildings, class rooms, laboratories, workshops, dean's offices and rector's office. The University has a specific atmosphere thank for its nineteenth-century palaces and revitalized post-industrial buildings adapted for modern classrooms and laboratories. A park located in the center of the campus, with its unique trees is something the University is proud of.

Please, see the [map of our campus](#) [1].

TUL offers student housing for students from outside of the city. We have nine student dorms with good conditions and atmosphere for learning as well as favorable climate for leisure. A computer network that provides delivery of the Internet to every room, canteen, student clubs - these are just some of the advantages of our dorms. TUL has a concert hall, which is located in one of the buildings. This property is a modern stage, equipped with multimedia equipment and auditorium and is designated to host events like elections of Miss of the University, festivals, competitions and meetings.

Fees for the dorms (in the academic year 2016/2017):

- triple room – Dorm 5 - 250 PLN per person per month; Dorms 2 to 4 and 6 to 8 - 270 PLN per person per month
- twin room - Dorm 5 - 300 PLN per person per month; Dorms 2 to 4 and 6 to 8 - 320 per person per month
- single room – Dorm 5 - 330 PLN per person per month; Dorms 2 to 4 and 6 to 8 - 350 PLN per person per month; Dorm 9 - 360 PLN per person per month

In our campus there are the offices of student organizations, sports facilities, post office, medical clinics, canteen and small shops and a modern auditorium, which hosts a number of cultural and scientific

events. Also, the campus hosts the Student Radio ŻAK in one of its dorms.

For more information about accommodation in our dormitories, please visit the website of the Student Government (section ("[Zakwaterowanie](#) [2]"). If you want to apply for student housing in our campus, please download forms [here](#) [3].



[4]



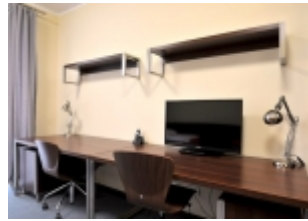
[5]



[6]



[7]



[8]



[9]



[10]



[11]



[12]



[13]



[14]



[15]

Submitted by Katarzyna Misztela on 20.11.2015

Updated 03.02.2017

Source URL: <https://rekrutacja.p.lodz.pl/en/accommodation>

Links

[1] <http://www.p.lodz.pl/pl/Mapa-Kampusu>

[2] <https://samorzad.p.lodz.pl/zakwaterowania>

[3] <https://samorzad.p.lodz.pl/wnioski-do-pobrania-zakwaterowania>

[4]

https://rekrutacja.p.lodz.pl/sites/default/files/styles/poziom_sz600px/public/media_root/mae_0354mn.jpg?itok=1taUXHLN

[5]

https://rekrutacja.p.lodz.pl/sites/default/files/styles/poziom_sz600px/public/media_root/dsc_6314mn.jpg?itok=3922oVOB

[6]

https://rekrutacja.p.lodz.pl/sites/default/files/styles/poziom_sz600px/public/media_root/_fot9227mn.jpg?itok=wy5cfdFY

[7]

https://rekrutacja.p.lodz.pl/sites/default/files/styles/poziom_sz600px/public/media_root/jsz_2848mn.jpg?itok=pXN8sV3d

[8]

https://rekrutacja.p.lodz.pl/sites/default/files/styles/poziom_sz600px/public/media_root/jsz_2915mn.jpg?itok=9dKnfEpG

[9]

https://rekrutacja.p.lodz.pl/sites/default/files/styles/poziom_sz600px/public/media_root/jsz_2933mn.jpg?itok=5Fwd_Ezh

[10]

https://rekrutacja.p.lodz.pl/sites/default/files/styles/poziom_sz600px/public/media_root/imgp1928.jpg?itok=-OBVEt0j

[11]

https://rekrutacja.p.lodz.pl/sites/default/files/styles/poziom_sz600px/public/media_root/jsz_4909_mn.jpg?itok=ID6xugEu

[12]

https://rekrutacja.p.lodz.pl/sites/default/files/styles/poziom_sz600px/public/media_root/jsz_3033_mn.jpg?itok=W4PHv4E-

[13]

https://rekrutacja.p.lodz.pl/sites/default/files/styles/poziom_sz600px/public/media_root/jsz_3185_mn.jpg?itok=xd6MCfIZ

[14]

https://rekrutacja.p.lodz.pl/sites/default/files/styles/poziom_sz600px/public/12-wirtualny-spacer.jpg?itok=5FHUvQbn

[15]

https://rekrutacja.p.lodz.pl/sites/default/files/styles/poziom_sz600px/public/media_root/_fot9231mn.jpg?itok=M6NQP4F